



Whitepost Hill, Redhill

£350,000





“

This modern ground floor apartment on Whitepost Hill offers contemporary living, generous rooms and sash-window views across Redhill, with Redhill Common right outside. Peaceful yet well connected, it sits between Redhill and Reigate with allocated parking and excellent transport links close by.

”

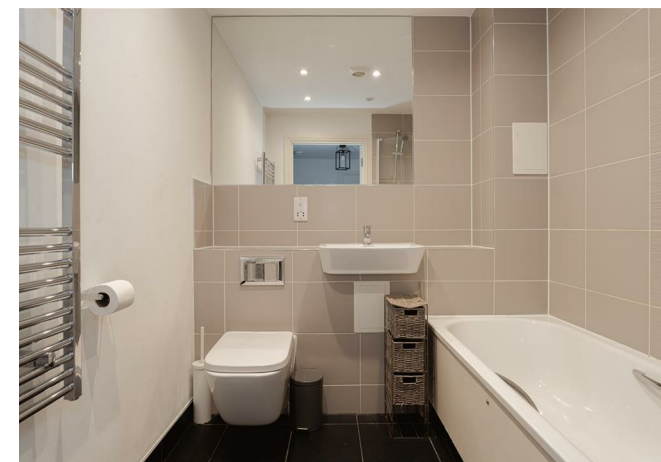


Set on the elevated stretch of Whitepost Hill, this smart and contemporary ground floor apartment at Whitepost House offers a rare combination of modern living, privacy and far-reaching views across Redhill. Built in 2016, the development sits beside the open greenery of Redhill Common, giving the property an immediate sense of space and calm while still being moments from both town centres.

The apartment itself is beautifully arranged, with elegant sash windows drawing in natural light and framing the outlook. A well-designed kitchen/diner provides a sociable hub for everyday living, while the two bedrooms are both generous in size, making the home ideal for couples, sharers or anyone needing a dedicated workspace. The family bathroom is neatly finished and thoughtfully laid out, continuing the home's modern feel.

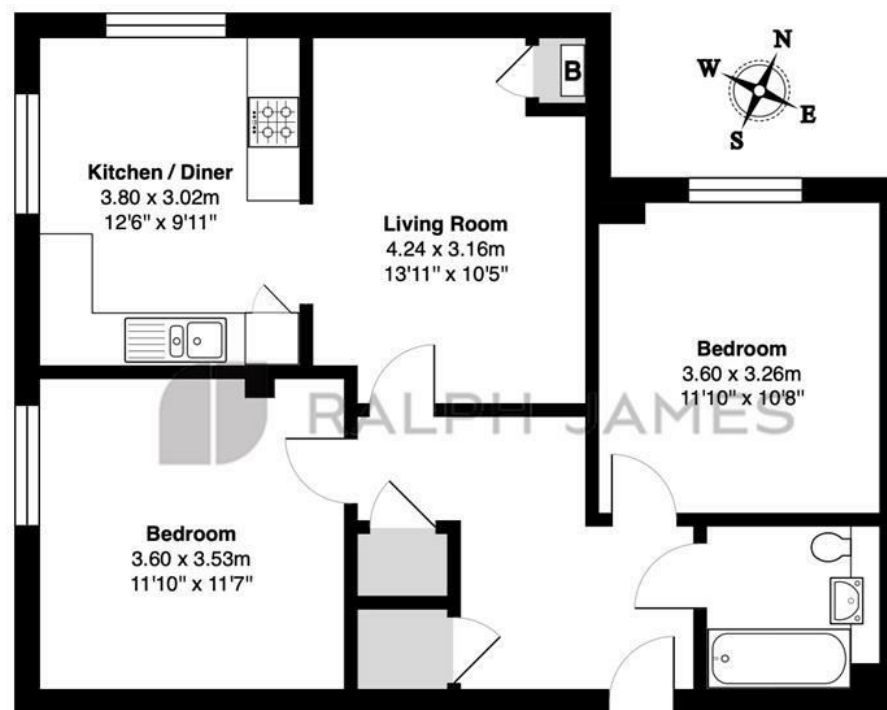
Tucked away from the road, the property enjoys a peaceful position with the added benefit of allocated parking and visitor spaces. Redhill and Reigate are both within easy reach, offering a wide choice of shops, cafés, restaurants and leisure facilities, along with excellent transport links. Redhill station provides fast services to London Bridge, Victoria, Gatwick and Brighton, and access to the M25 and A23 is straightforward for wider travel.

With its blend of contemporary comfort, scenic surroundings and superb connectivity, this is a home that delivers convenience without compromising on tranquillity.



Need to know

- Modern ground floor apartment built in 2016 on the sought-after Whitepost Hill.
- Beautiful sash windows and elevated views stretching across Redhill.
- Two well-proportioned bedrooms offering flexibility for guests or home working.
- Bright and sociable kitchen/diner designed for modern living.
- Well-laid-out family bathroom with a contemporary finish.
- Allocated parking plus visitor spaces in a peaceful, private setting.
- Redhill Common on the doorstep, with easy access to both Redhill and Reigate.
- Excellent transport links nearby, including fast London services and convenient road connections.



Ground Floor

Whitepost House, Whitepost Hill, Redhill

Total Area: 67.2 m² ... 724 ft²

FOR ILLUSTRATIVE PURPOSES ONLY.

Whilst every attempt has been made to ensure the accuracy of the floor plan shown, all measurements, positioning, fixtures, features, fittings and any other data shown are an approximate interpretation for illustrative purposes only and are not to scale.

No responsibility is taken for any error, omission, miss-statement or use of data shown.

The above statement applies to both 'Still Moving London LTD' and the Company or individual displaying this floor plan.

Unauthorised reproduction prohibited.

© Still Moving London LTD (www.stillmoving.london)



Interested?

redhill@ralphjames.co.uk
01737 765 555

1

ralphjames.co.uk